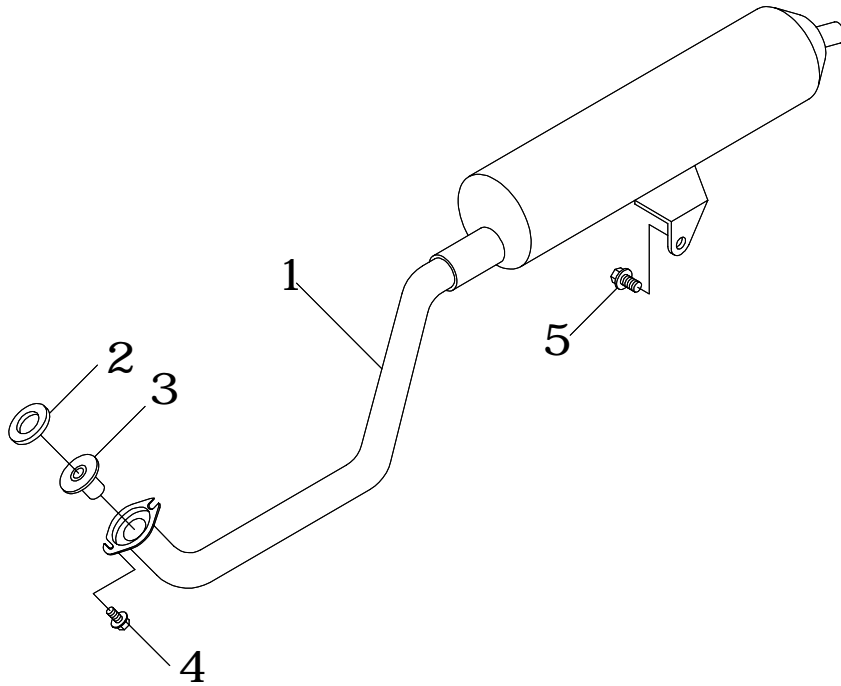
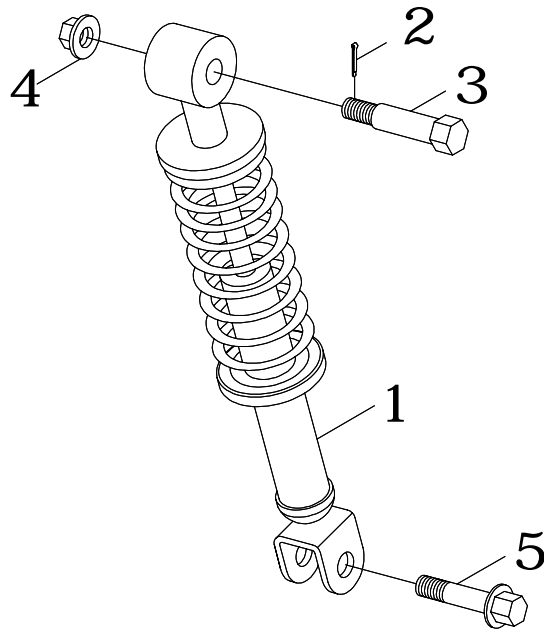


EXHAUST MUFFLER



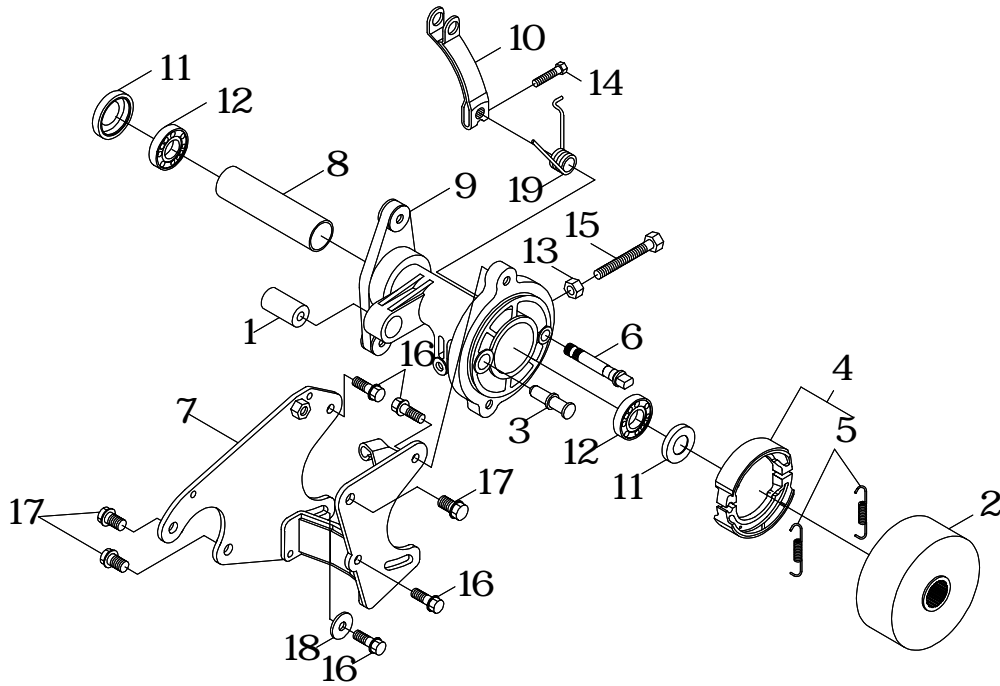
NO.	PARTS NO.	PARTS NAME	QTY	NOTE
1	31610-SK2-00	EXHAUST MUFFLER ASS'Y	1	
2	31613-NAF-00	GASKET, EXHAUST PIPE (25.4*34*4)	1	
3	31615-NAF-02	PIPE, REDUCTION (Ø9)	1	
4	94714-08018-C	BOLT, FLANGE	2	
5	96414-08016-B	BOLT, FLANGE	1	

REAR SUSPENSION



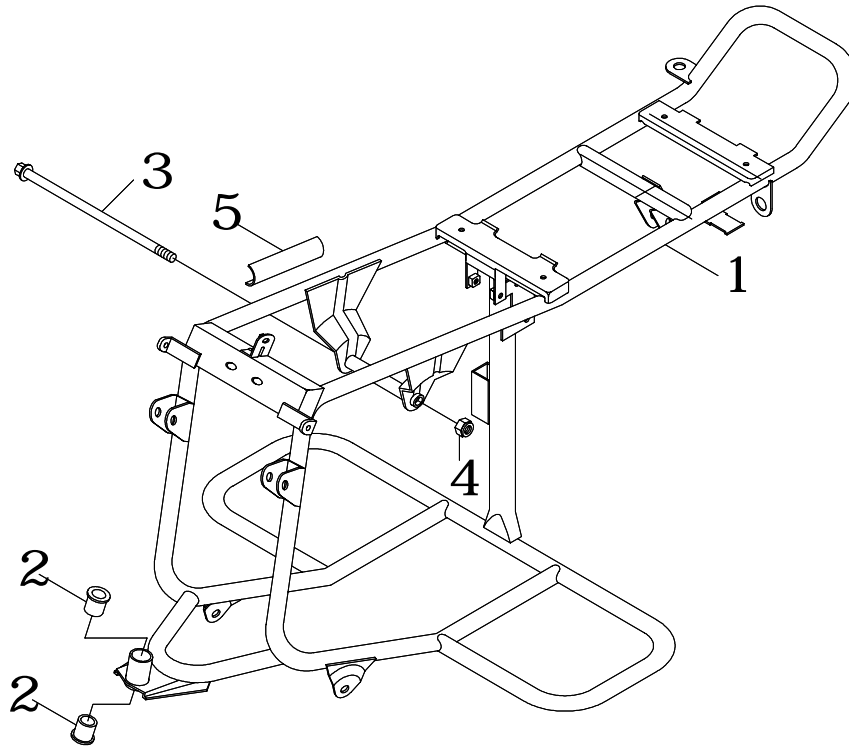
NO.	PARTS NO.	PARTS NAME	QTY	NOTE
1	32210-SK2-00	SHOCK ABSORBER ASS'Y, REAR	1	
2	90240-18016-B	COTTER PIN 1.8*16	1	
3	94716-08039-B	BOLT	1	
4	95401-081208-B	NUT, FLANGE	1	
5	96414-08035-B	BOLT, FLANGE	1	

REAR BRAKE



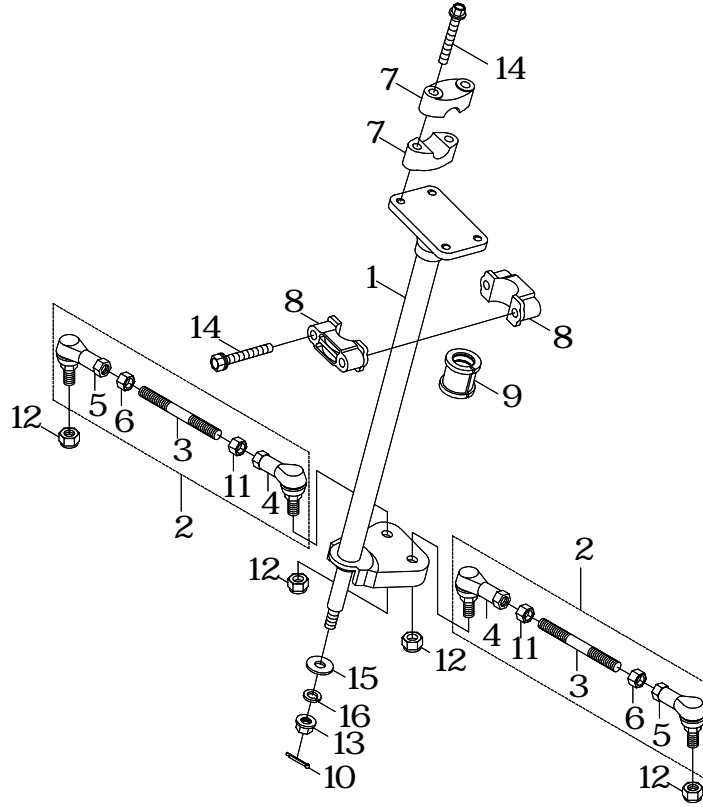
NO.	PARTS NO.	PARTS NAME	QTY	NOTE
1	15116-NAF-00	BUSH, REAR SHOCK ABSORBER	1	
2	32320-SK2-00	HUB, REAR BRAKE	1	
3	32326-SK2-00	PIN, PIVOT	1	
4	32345-SK2-00	BRAKE SHOE KIT	1	
5	32346-SK2-00	SPRING, TENSION	2	
6	32351-SK2-00	CAMSHAFT	1	
7	41191-SK2-00	ENGINE HANGER	1	
8	42815-SK2-00	SPACER, BEARING	1	
9	42881-SK2-00	HUB, REAR	1	
10	45855-SK9-00	LEVER, CAMSHAFT	1	
11	93110-30477	OIL SEAL 30*47*7	2	
12	9332C-254712	BALL BEARING 6005CO	2	
13	95201-081207-B	NUT, HEXAGON	1	
14	96210-05025-B	BOLT, HEXAGON	1	
15	96210-08055-B	BOLT, HEXAGON	1	
16	96414-08016-B	BOLT, FLANGE	5	
17	96414-10020-B	BOLT, FLANGE	3	
18	97201-082420-B	WASHER, PLATE 87*24*20	2	
19	97508-25155-B	SPRING TORSION	1	

FRAME



NO.	PARTS NO.	PARTS NAME	QTY	NOTE
1	41110-SK2-01	FRAME COMP	1	
2	93330-152118	BUSH, SOLID	2	
3	94610-10190-B	BOLT, FLANGE	1	
4	95311-101710-B	NUT, NYLON	1	
5	62111-CHP-00	PADDED	2	

STEERING



NO.	PARTS NO.	PARTS NAME	QTY	NOTE
1	42101-SK2-00	COLUMN, STEERING	1	
2	42140-SK2-00	ROD, TIE ASS'Y	2	
3	42141-SK2-00	ROD, TIE	2	
4	42142-SK2-00	JOINT, UNIVERSAL R	2	
5	42143-SK2-00	JOINT, UNIVERSAL L	2	
6	42146-SK2-00	NUT	2	
7	46125-SK2-00	HOLDER, HANDLE UPPER	4	
8	46411-SK2-00	BEARING, STEERING	2	
9	46417-SK2-00	PU BUSH	1	PU
10	90240-23020-B	COTTER PIN 2.3*20	1	
11	95201-101408-B	NUT, HEXAGON	2	
12	95311-101710-B	NUT, NYLON	4	
13	95401-101409-B	NUT, FLANGE	1	
14	96414-08050-B	BOLT, FLANGE	6	
15	97201-102620-B	WASHER, PLATE	1	
16	97301-101720-B	WASHER, SPRING	1	

